

## Directional valves ► Supplementary products

### 4/2-directional valve, Series 840

► Qn = 200 l/min ► Pilot valve width: 22.5 mm ► pipe connection ► compressed air connection output: Ø6x1  
► Electr. connection: Plug, EN 175301-803, form C ► Manual override: with detent ► double solenoid ► Qn = 200 l/min



Version	Diaphragm poppet valve
Pilot	internal
Sealing principle	Soft sealing
Mounting on manifold strip	PRS strip
Working pressure min./max.	1.8 bar / 10 bar *
Control pressure min./max.	1.8 bar / 10 bar
Ambient temperature min./max.	-15°C / +50°C *
Medium temperature min./max.	-15°C / +50°C *
Medium	Compressed air
Max. particle size	50 µm
Oil content of compressed air	0 mg/m³ - 1 mg/m³
Connector standard	EN 175301-803, form C
Degree of protection	IP65
With connection	Protected against polarity reversal
Duty cycle	100 %
Switch-on time	12 ms
Switch-off time	12 ms
Weight	See table below
Materials:	
Housing	Polyoxymethylene
Seals	Acrylonitrile Butadiene Rubber

\* The maximum working pressure depends on the ambient temperature. The following values are applicable:  
-15°C - 50°C: Working pressure 1.8 - 8 bar possible.  
-15°C - 40°C: Working pressure 1.8 - 10 bar possible.

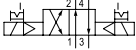
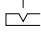
#### Technical Remarks

- The min. control pressure must be adhered to, since otherwise faulty switching and valve failure may result!
- The pressure dew point must be at least 15 °C under ambient and medium temperature and may not exceed 3 °C.
- The oil content of compressed air must remain constant during the life cycle.
- Use only the approved oils from AVENTICS, see chapter „Technical information“.
- Versions with voltage of less than 50 V DC do not have a protective ground

Operational voltage			Voltage tolerance		Power consumption	Switch-on power		Holding power	
DC	AC 50 Hz	AC 60 Hz	DC	AC 60 Hz	DC	AC 50 Hz	AC 60 Hz	AC 50 Hz	AC 60 Hz
					W	VA	VA	VA	VA
12 V	-	-	-10% / +10%	-	1.6	-	-	-	-
24 V	-	-	-10% / +10%	-	1.6	-	-	-	-
-	24 V	24 V	-	-10% / +15%	-	3	2.6	2.1	1.9
-	110 V	110 V	-	-10% / +15%	-	3.1	2.6	2.2	1.9
-	230 V	230 V	-	-10% / +15%	-	3.2	2.8	2.3	2
-	230 V	230 V	-	-10% / +15%	-	3.5	3	2.5	2.2

**4/2-directional valve, Series 840**

► Qn = 200 l/min ► Pilot valve width: 22.5 mm ► pipe connection ► compressed air connection output: Ø6x1  
 ► Electr. connection: Plug, EN 175301-803, form C ► Manual override: with detent ► double solenoid ► Qn = 200 l/min

	MO	Compressed air connection				Operational voltage			Part No.
		Input	Output	Exhaust	Pilot control exhaust	DC	AC 50 Hz	AC 60 Hz	
		Ø6x1	Ø6x1	Ø6x1	Ø 4,5	12 V	-	-	5728410410
						24 V	-	-	<b>5728410420</b>
						24 V	-	-	<b>5728410620</b>
						-	24 V	24 V	5728415420
						-	110 V	110 V	5728415470
						-	230 V	230 V	5728415480
						-	230 V	230 V	5728415680

Part No.	Holding power	Holding power	Switch-on power	Switch-on power	Power consumption	Flow rate value	Weight	Note
	AC 50 Hz	AC 60 Hz	AC 50 Hz	AC 60 Hz	24 V DC	Qn		
	[VA]	[VA]	[VA]	[VA]	[W]	[l/min]	[kg]	
5728410410	-	-	-	-	1.6	200	0.156	-
<b>5728410420</b>	-	-	-	-	1.6		0.157	-
<b>5728410620</b>	-	-	-	-	1.6		0.158	1)
5728415420	2.1	1.9	3	2.6	-		0.153	-
5728415470	2.2	1.9	3.1	2.6	-		0.157	-
5728415480	2.3	2	3.2	2.8	-		0.156	-
5728415680	2.5	2.2	3.5	3	-		0.16	1)

HHB = Manual override

1) LED status display: Red

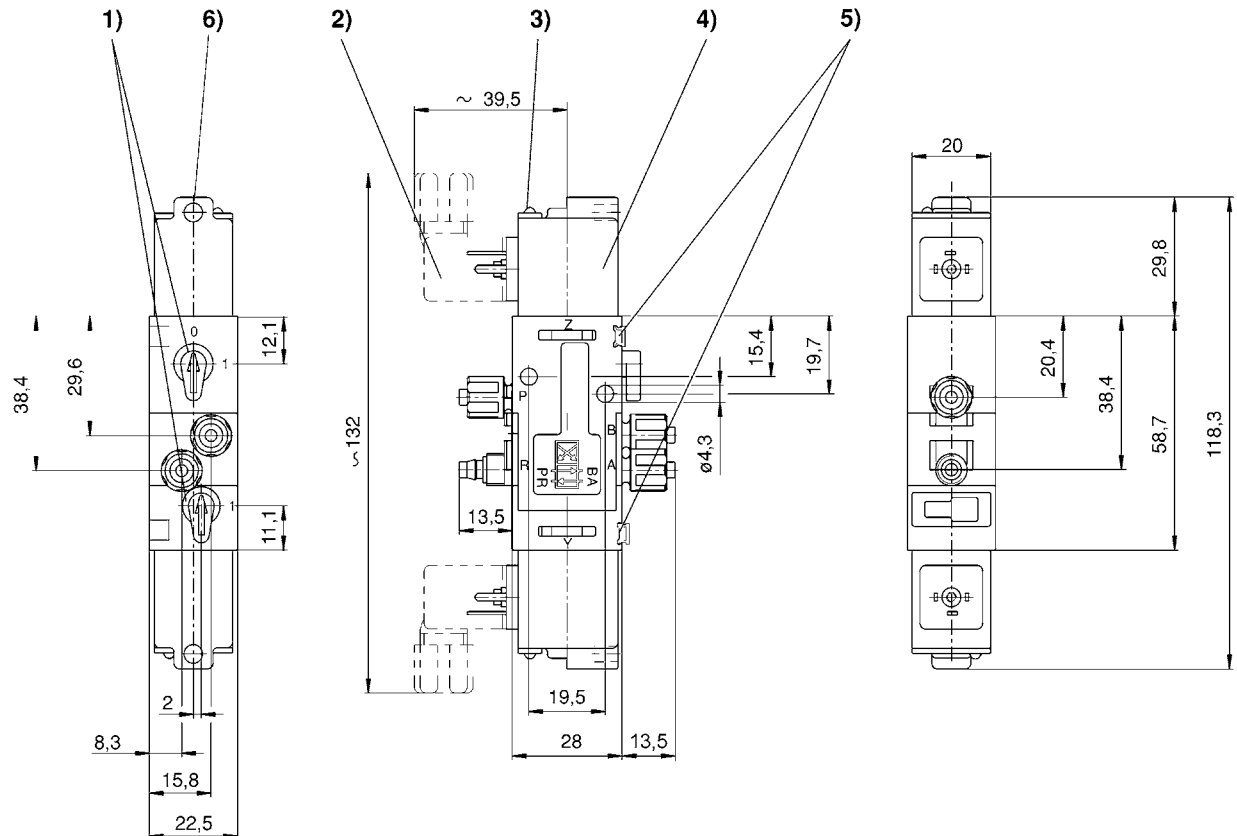
Nominal flow Qn at 6 bar and Δp = 1 bar

## Directional valves ► Supplementary products

### 4/2-directional valve, Series 840

►  $Q_n = 200$  l/min ► Pilot valve width: 22.5 mm ► pipe connection ► compressed air connection output:  $\varnothing 6 \times 1$   
 ► Electr. connection: Plug, EN 175301-803, form C ► Manual override: with detent ► double solenoid ►  $Q_n = 200$  l/min

#### Dimensions



D572\_941

1) manual override 2) el. connector 3) LED display 4) coil can be rotated at 180° intervals  
 5) mounting space for name plate 6) hold for M5 fitting or silencer  $\varnothing 4.5$  mm