

Directional valves → Supplementary products

5/2-way valve, Series 740 CP

► Qn = 950 l/min ► pipe connection ► compressed air connection output: Ø 10x1 ► Electr. connection: Plug, EN 175301-803, form A ► with throttle ► corrosion-protected ► Can be assembled into blocks ► Manual override: with detent ► double solenoid



00134167

Version	Diaphragm poppet valve
Pilot	internal
Sealing principle	soft sealing
Blocking principle	Plate principle, Single base plate principle
Mounting on manifold strip	PRS strip
Working pressure min./max.	2 bar / 10 bar
Ambient temperature min./max.	-15 °C / +50 °C
Medium temperature min./max.	-15 °C / +50 °C
Medium	Compressed air
Max. particle size	50 µm
Oil content of compressed air	0 mg/m³ - 5 mg/m³
Connector standard	EN 175301-803:2006
Degree of protection with electrical connector/plug	IP 65
Compatibility index	See table below
Duty cycle	100 %
Switch-on time	40 ms
Materials:	
Housing	Polyoxymethylene
Seals	Acrylonitrile Butadiene Rubber
Front plate	Polyarylamide

Technical Remarks

- The pressure dew point must be at least 15 °C under ambient and medium temperature and may not exceed 3 °C.
- The oil content of air pressure must remain constant during the life cycle.
- Use only the approved oils from Bosch Rexroth, see chapter „Technical information“.
- ATEX optional: ATEX version can be produced by combining the basic valve without coil with an ATEX coil. ATEX ID: see ATEX coils catalog page.

Operating voltage			Voltage tolerance			Power consumption	Switch-on power		Holding power	
DC	AC 50 Hz	AC 60 Hz	DC	AC 50 Hz	AC 60 Hz	DC	AC 50 Hz	AC 60 Hz	AC 50 Hz	AC 60 Hz
						W	VA	VA	VA	VA
24 V	-	-	-10% / +10%	-	-	2.1	-	-	-	-
-	230 V	230 V	-	-20% / +10%	-10% / +20%	2.1	6.6	5.5	4.18	3.3
-	-	-	-	-	-	2.1	-	-	-	-

	MO	Compressed air connection			Operating voltage			Holding power	Holding power	Switch-on power		Part No.
		Input	Output	Exhaust	DC	AC 50 Hz	AC 60 Hz	AC 50 Hz	AC 60 Hz	AC 50 Hz	AC 60 Hz	
		Ø 10x1	Ø 10x1	M14x1	24 V	-	-	-	-	-	-	5727920220
					-	230 V	230 V	4.18	3.3	6.6	5.5	5727925280
		Ø 10x1	Ø 10x1	M14x1	-	-	-	-	-	-	-	5727925302

Supplementary products

Part numbers marked in bold are available from the central warehouse in Germany, see the shopping basket for more detailed information
Pneumatics catalog, online PDF, as of 2012-11-16, © Bosch Rexroth AG, subject to change

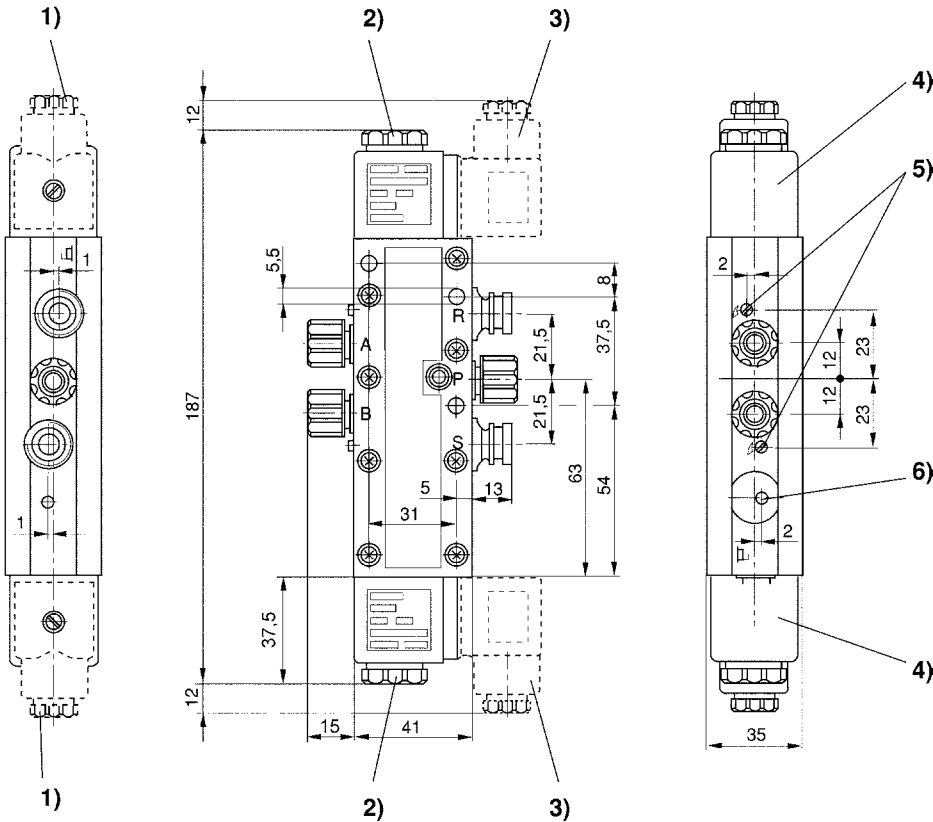
Directional valves → Supplementary products

5/2-way valve, Series 740 CP
 ► Qn = 950 l/min ► pipe connection ► compressed air connection output: Ø 10x1 ► Electr. connection: Plug, EN 175301-803, form A ► with throttle ► corrosion-protected ► Can be assembled into blocks ► Manual override: with detent ► double solenoid

Part No.	Flow rate value	Compatibility index	Weight	Note
	Qn			
	[l/min]		[kg]	
5727920220	950	14	0.52	1); 3)
5727925280				
5727925302	950	13, 14	0.306	2); 4)

MO = Manual override
 1) without electrical connector
 2) Basic valve without coil
 3) Protected against polarity reversal
 4) ATEX optional
 Nominal flow Qn at 6 bar and Δp = 1 bar

Dimensions



D572_792