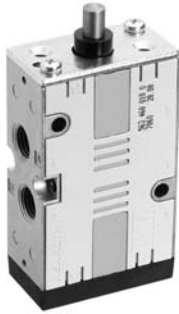


## Directional valves → Mechanically operated

**5/2-way valve, Series CD07**

► Qn= 1200 l/min ► pipe connection ► compressed air connection output: G 1/4 ► suitable for ATEX



00134152

Version	Spool valve, zero overlap
Sealing principle	soft sealing
Working pressure min./max.	-0.95 bar / 10 bar
Ambient temperature min./max.	-25 °C / +80 °C
Medium temperature min./max.	-25 °C / +80 °C
Medium	Compressed air
Max. particle size	50 µm
Oil content of compressed air	0 mg/m³ - 1 mg/m³
Compressed air connection	according to ISO 228-1

## Materials:

Seals

Acrylonitrile Butadiene Rubber

	Actuating element	Compressed air connection				Qn	Qn	Qn	Actuating force Min.	Part No.
		Input	Output	Exhaust	Pilot connection		1 → 2	2 → 3		
						[l/min]	[l/min]	[l/min]		
	Plunger	G 1/4	G 1/4	G 1/4	-	1200	1200	1200	70	<b>5634600100</b>
	Roller	G 1/4	G 1/4	G 1/4	-	1200	1200	1200	40	<b>5634610100</b>
	Hand lever, with detent, without detent	G 1/4	G 1/4	G 1/4	-	1200	1200	1200	20	<b>5634630100</b>
	Hand lever	G 1/4	G 1/4	G 1/4	-	1200	1200	1200	15	<b>5634640100</b>
	Rotary lever, with detent	G 1/4	G 1/4	G 1/4	-	1200	1200	1200	15	<b>5634650100</b>
	Button	G 1/4	G 1/4	G 1/4	-	1200	1200	1200	70	<b>5634660100</b>
	Button	G 1/4	G 1/4	G 1/4	G 1/8	1200	1200	1200	80	<b>5634669200</b>

Part No.	Control pressure min./max.	Material: Housing	Material: Actuating control	Weight	Fig.
	[bar]			[kg]	
<b>5634600100</b>	-	Die cast zinc; Polyamide, fiber-glass reinforced	Stainless steel	0.54	Fig. 1
<b>5634610100</b>	-	Die cast zinc; Polyamide, fiber-glass reinforced	Stainless steel	0.59	Fig. 2

Nominal flow Qn at 6 bar and Δp = 1 bar

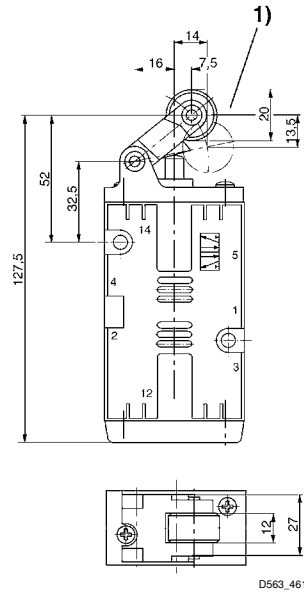


## Directional valves → Mechanically operated

### 5/2-way valve, Series CD07

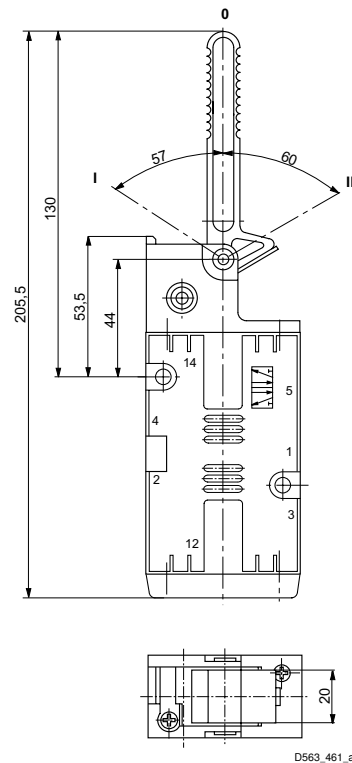
► Qn= 1200 l/min ► pipe connection ► compressed air connection output: G 1/4 ► suitable for ATEX

Dimensions, Fig. 2



1) approach angle of rollers max. 30°

Dimensions, Fig. 3

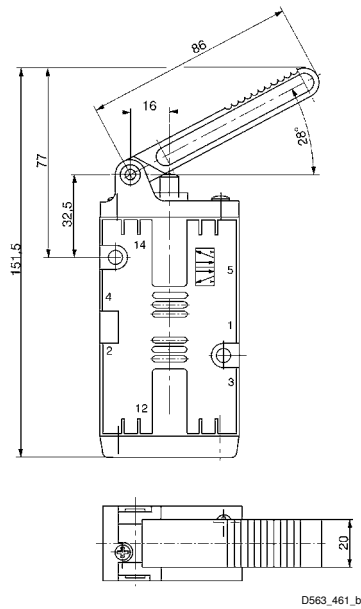
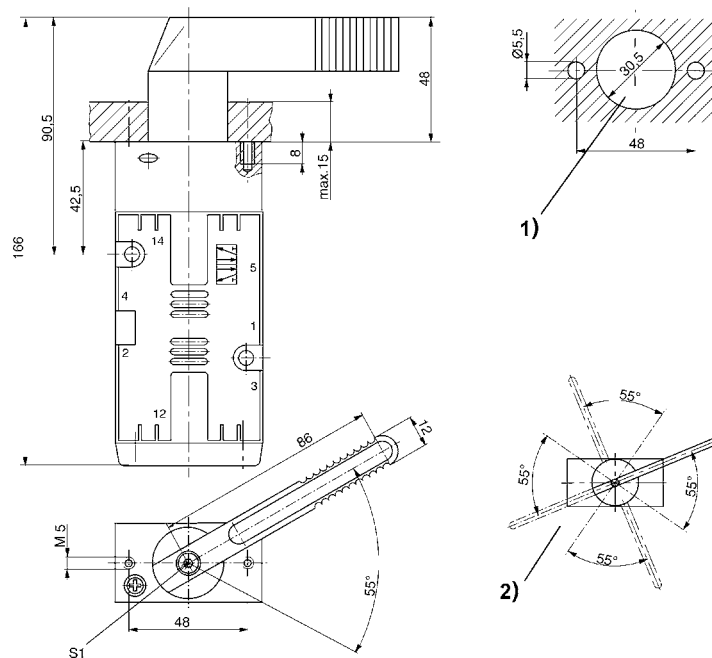


Position 0: initial position, position I: automatic spring return, position II: with detent; manual return

## Directional valves → Mechanically operated

**5/2-way valve, Series CD07**

► Qn= 1200 l/min ► pipe connection ► compressed air connection output: G 1/4 ► suitable for ATEX

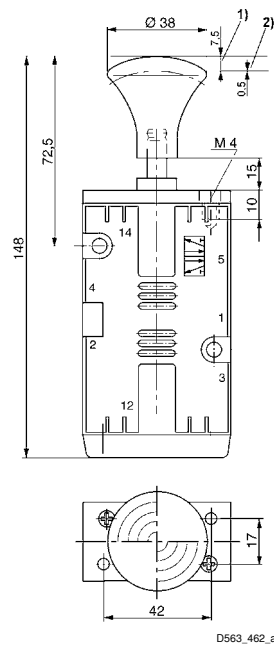
**Dimensions, Fig. 4****Dimensions, Fig. 5**

## Directional valves → Mechanically operated

### 5/2-way valve, Series CD07

►  $Q_n = 1200 \text{ l/min}$  ► pipe connection ► compressed air connection output: G 1/4 ► suitable for ATEX

Dimensions, Fig. 6



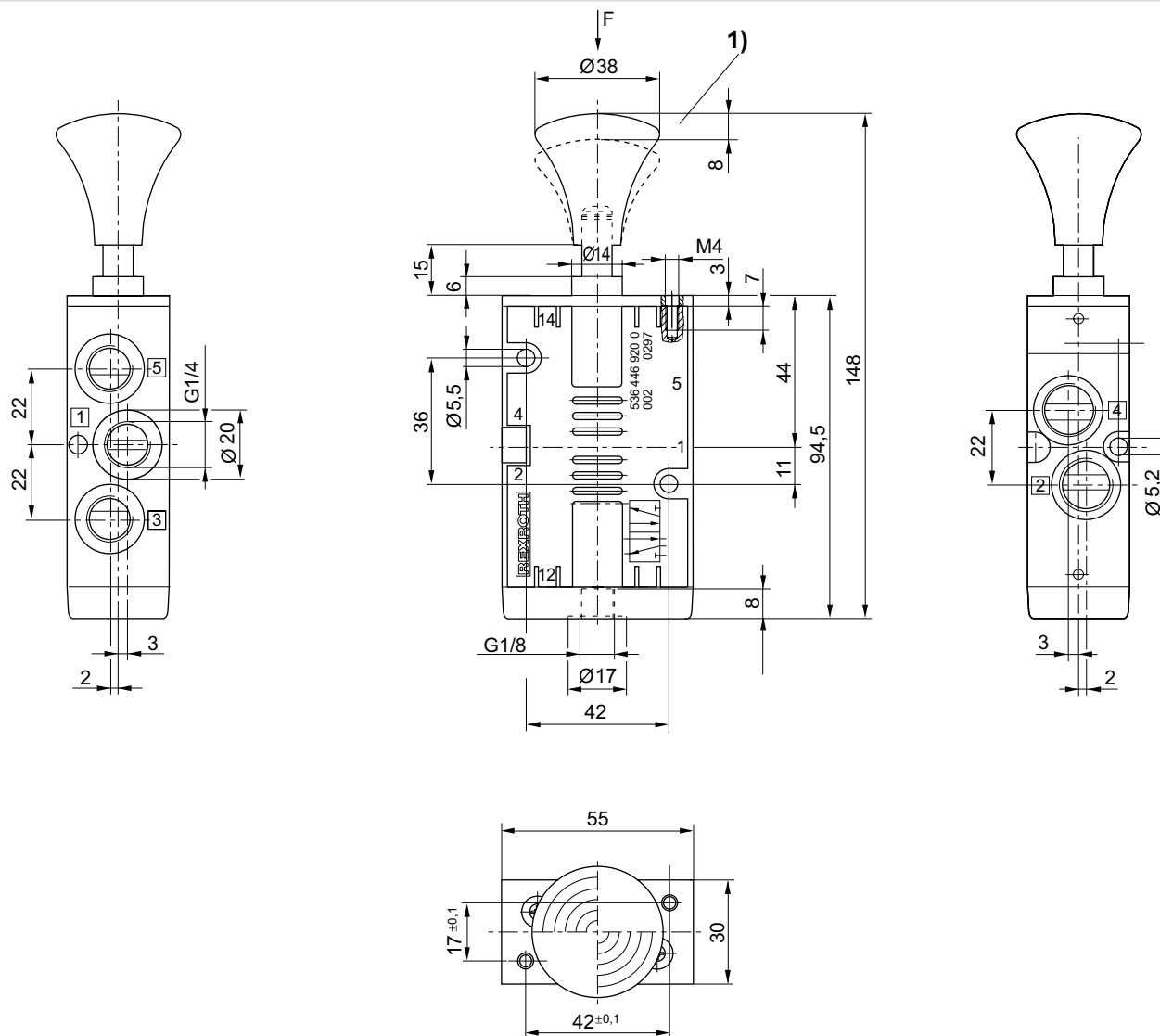
1) Stroke 2) Overstroke

Directional valves → Mechanically operated

**5/2-way valve, Series CD07**

► Qn= 1200 l/min ► pipe connection ► compressed air connection output: G 1/4 ► suitable for ATEX

Dimensions, Fig. 7



1) Stroke

00135345