

Directional valves ► Supplementary products

3/2-directional valve, Series AP

► Qn= 190 l/min ► pipe connection ► compressed air connection output: M5



00108499

Version
Working pressure min./max.
Ambient temperature min./max.
Medium temperature min./max.
Medium
Max. particle size
Oil content of compressed air

Poppet valve
0 bar / 10 bar
-30 °C / +80 °C
-30 °C / +80 °C
Compressed air
5 µm
0 mg/m³ - 5 mg/m³

Materials:
Housing
Seals

Aluminum
Acrylonitrile Butadiene Rubber

	Actuating element	Compressed air connection		Qn	Qn	Weight	Fig.	Note	Part No.
		Input	Output	1 → 2	2 → 3				
				[l/min]	[l/min]	[kg]			
	Plunger	M5	M5	190	150	0.036	Fig. 1	-	0820408001
	Roller	M5	M5	190	150	0.05	Fig. 2	-	0820408002
	Roller lever, one-way trip	M5	M5	190	150	0.055	Fig. 3	-	0820408003
	Push button	M5	M5	190	150	0.05	Fig. 4	-	0820408004
	Lever	M5	M5	190	150	0.042	Fig. 5	-	0820408005
	panel installation	M5	M5	190	150	0.068	Fig. 6	1); 2)	R450055451

1) Please order control button separately.

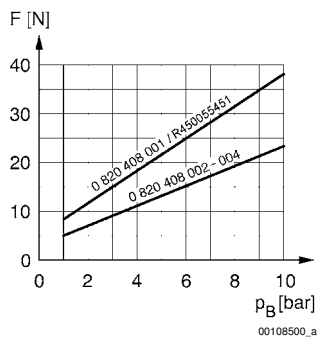
2) Cannot be combined with mushroom button with detent and rotary release R412012741

Nominal flow Qn at 6 bar and Δp = 1 bar

3/2-directional valve, Series AP

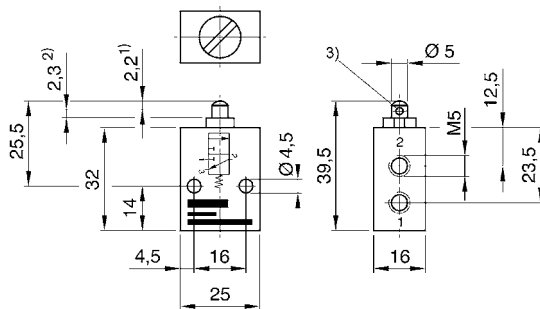
► Qn= 190 l/min ► pipe connection ► compressed air connection output: M5

Actuating force



F = actuating force
 p_B = Working pressure

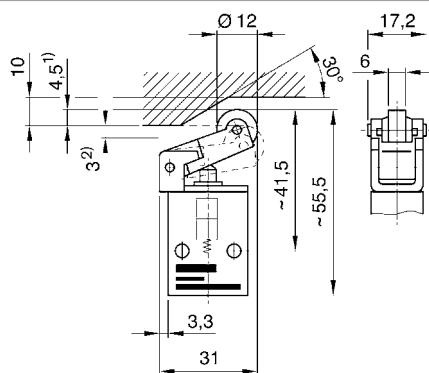
Dimensions, Fig. 1, Basic valve



- 1) actuating stroke
- 2) overstroke
- 3) Exhaust

Dimensions of basic valve apply to all types of actuation.

Dimensions, Fig. 2



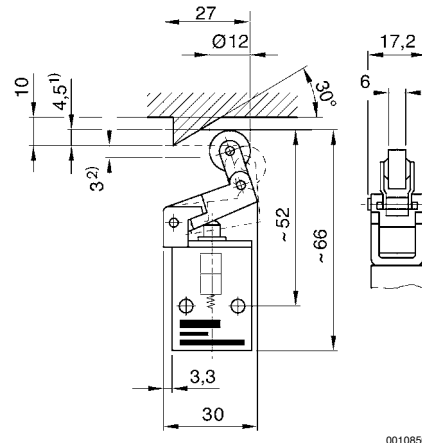
- 1) actuating stroke
- 2) overstroke

Directional valves ▶ Supplementary products

3/2-directional valve, Series AP

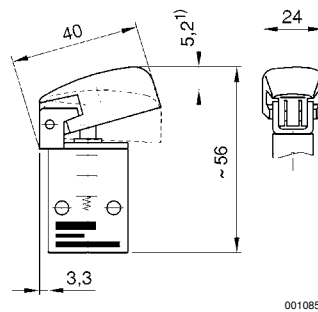
▶ Qn= 190 l/min ▶ pipe connection ▶ compressed air connection output: M5

Dimensions, Fig. 3



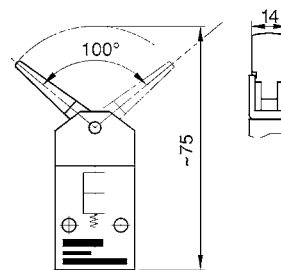
- 1) actuating stroke
- 2) overstroke

Dimensions, Fig. 4



- 1) actuating stroke

Dimensions, Fig. 5

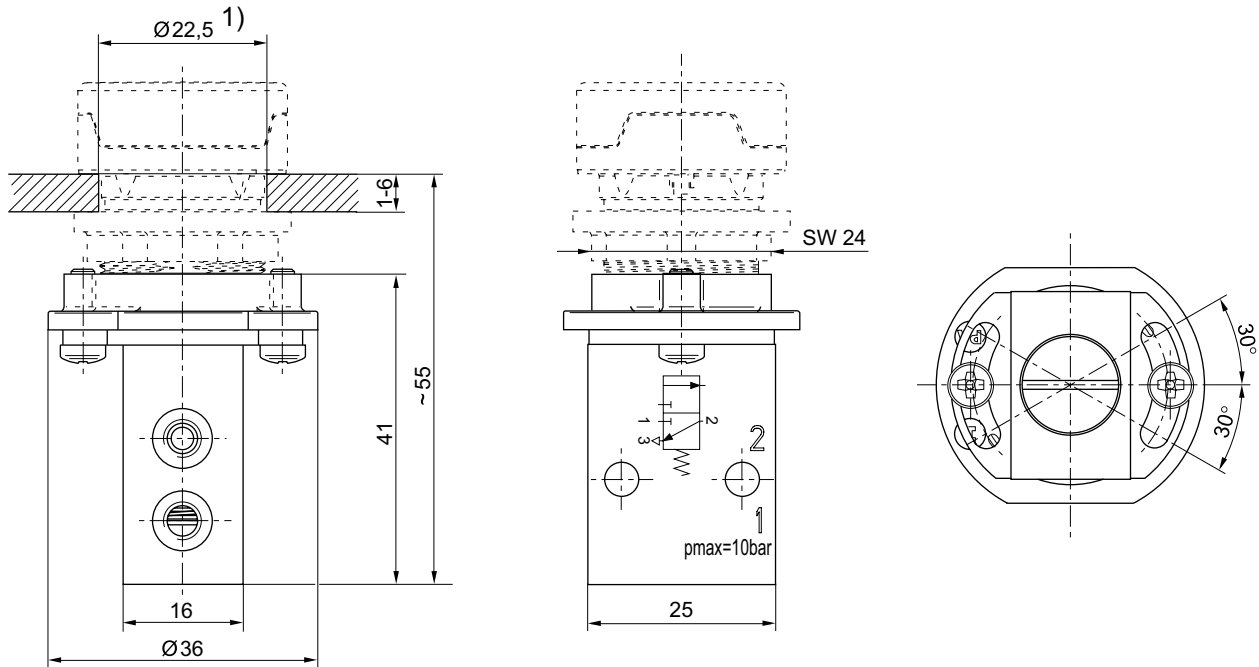


actuating torque: 5 Ncm

3/2-directional valve, Series AP

► Qn= 190 l/min ► pipe connection ► compressed air connection output: M5

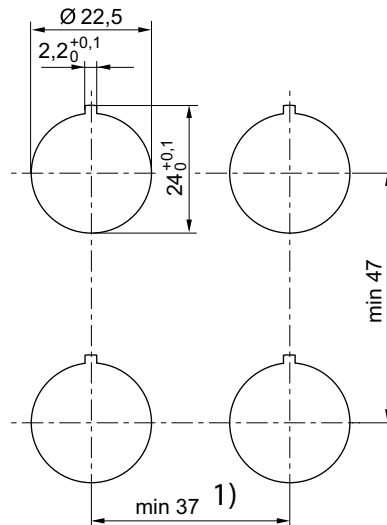
Dimensions, Fig. 6



00136371

1) cut-out in the front plate

Dimensions, cut-out in the front plate



00136378

1) For the mushroom buttons (R412012738, R412012739, R412012740) a minimum distance 41 mm must be ensured.