

Directional valves ► Mechanically operated

5/2-directional valve, Series CD04

► Qn= 900 l/min ► pipe connection ► compressed air connection output: G 1/8



00134141

Version

Spool valve, zero overlap
not lockable

Sealing principle

Soft sealing

Working pressure min./max.

-0.95 bar / 10 bar

Ambient temperature min./max.

-20 °C / +65 °C

Medium temperature min./max.

-20 °C / +65 °C

Medium

Compressed air

Max. particle size

50 µm

Oil content of compressed air

0 mg/m³ - 1 mg/m³

Compressed air connection

according to ISO 228-1

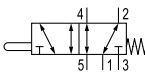
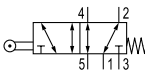
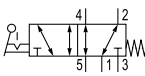
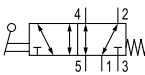
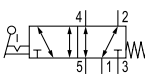
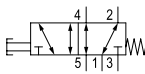
Materials:

Housing

Die cast zinc; Polyamide, fiber-glass reinforced

Seals

Acrylonitrile Butadiene Rubber

	Actuating element	Compressed air connection			Qn	Qn 1 → 2	Qn 2 → 3	Actuating force Min.	Part No.
		Input	Output	Exhaust					
					[l/min]	[l/min]	[l/min]	[N]	
	Plunger	G 1/8	G 1/8	G 1/8	900	900	900	70	5634200100
	Roller	G 1/8	G 1/8	G 1/8	900	900	900	35	5634210100
	Hand lever, with detent, without detent	G 1/8	G 1/8	G 1/8	900	900	900	15	5634230100
	Hand lever	G 1/8	G 1/8	G 1/8	900	900	900	60	5634240100
	Rotary lever, with detent	G 1/8	G 1/8	G 1/8	900	900	900	20	5634250100
	Button	G 1/8	G 1/8	G 1/8	900	900	900	70	5634260100

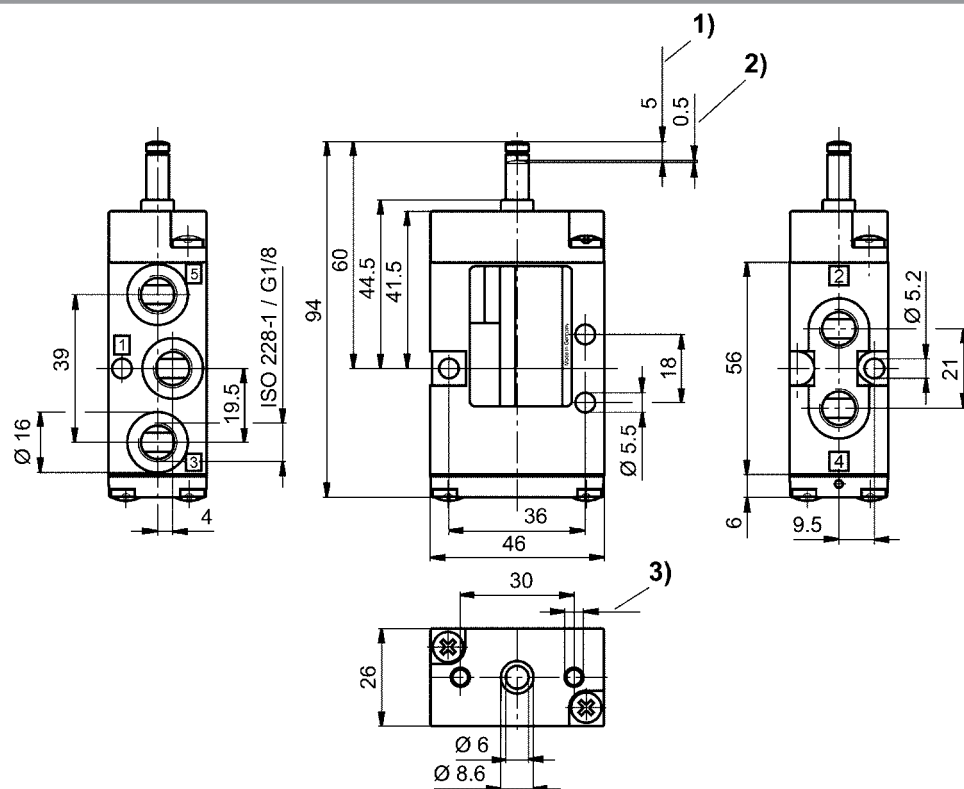
Part No.	Material: Actuating control	Weight	Fig.
		[kg]	
5634200100	Stainless steel	0.3	Fig. 1
5634210100	Polyoxymethylene	0.35	Fig. 2
5634230100	Polyoxymethylene	0.38	Fig. 3
5634240100	Aluminum	0.31	Fig. 4
5634250100	Plastic; Stainless steel	0.56	Fig. 5
5634260100	Polyoxymethylene	0.32	Fig. 6

Nominal flow Qn at 6 bar and Δp = 1 bar

5/2-directional valve, Series CD04

► Qn= 900 l/min ► pipe connection ► compressed air connection output: G 1/8

Dimensions, Fig. 1



1) Stroke 2) Overstroke 3) $\varnothing 4.5 - 12$ mm deep
Dimensions of basic valve apply to all types of actuation.

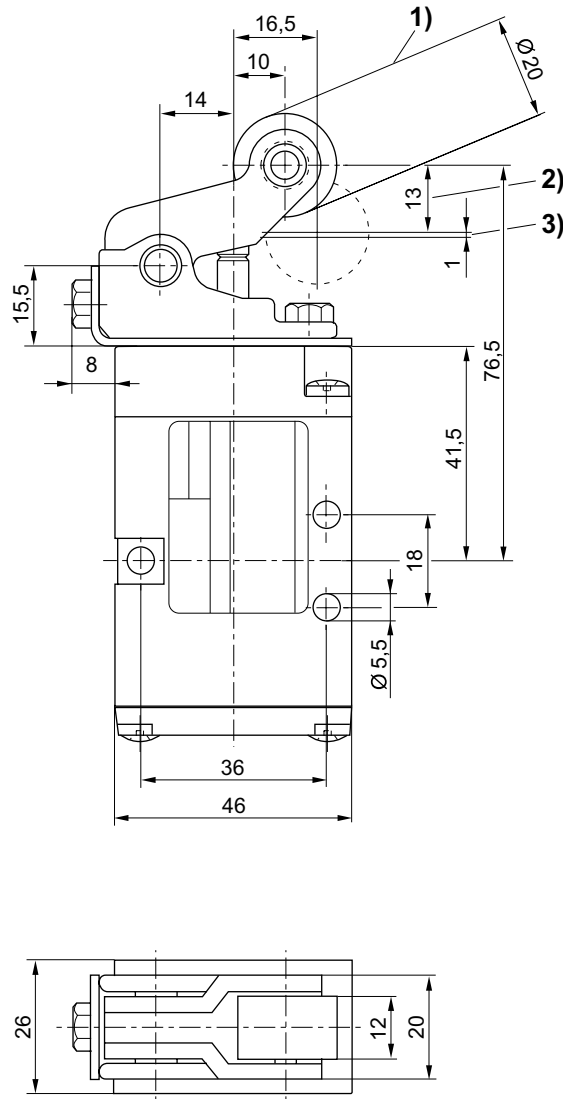
D563_420

Directional valves ▶ Mechanically operated

5/2-directional valve, Series CD04

▶ Qn= 900 l/min ▶ pipe connection ▶ compressed air connection output: G 1/8

Dimensions, Fig. 2



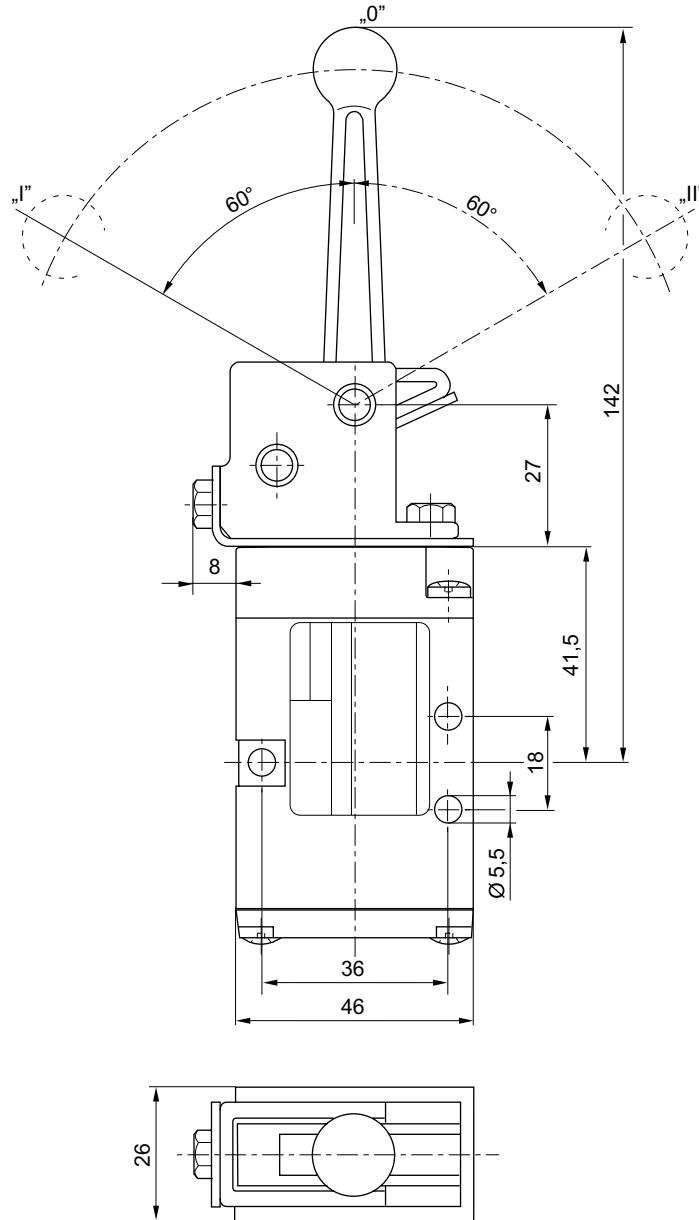
D563_421

1) approach angle of rollers max. 30° 2) stroke 3) overstroke
Dimensions of basic valve apply to all types of actuation.

5/2-directional valve, Series CD04

► Qn= 900 l/min ► pipe connection ► compressed air connection output: G 1/8

Dimensions, Fig. 3



D563_421_a

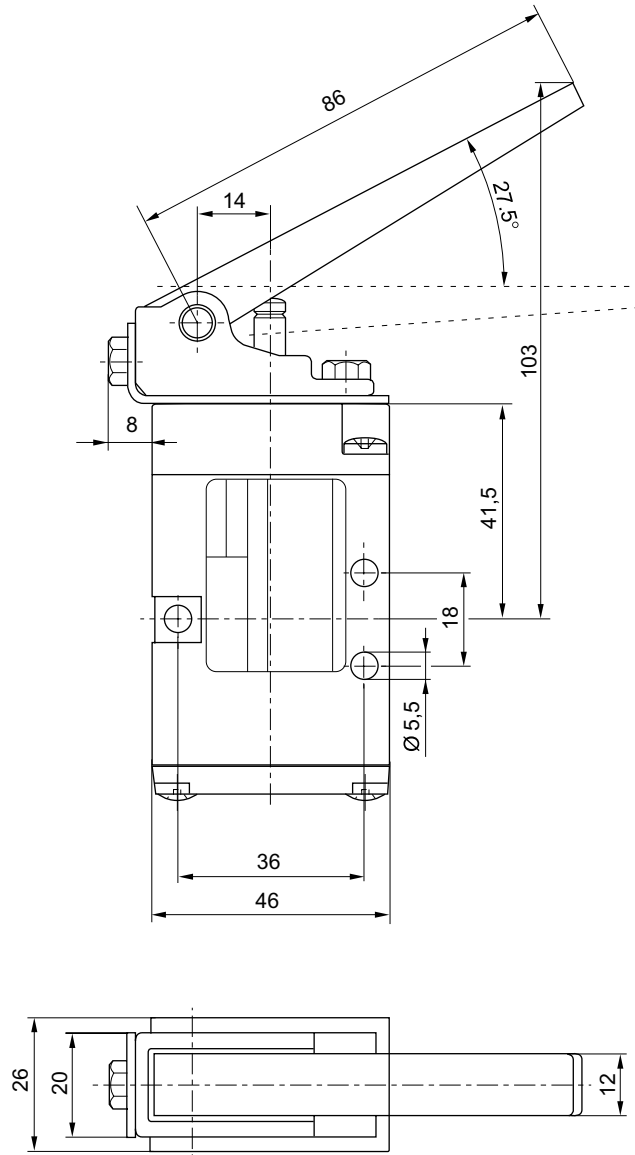
Position 0: initial position, position I: with detent; manual return, position II: automatic spring return.
Dimensions of basic valve apply to all types of actuation.

Directional valves ► Mechanically operated

5/2-directional valve, Series CD04

► Qn= 900 l/min ► pipe connection ► compressed air connection output: G 1/8

Dimensions, Fig. 4



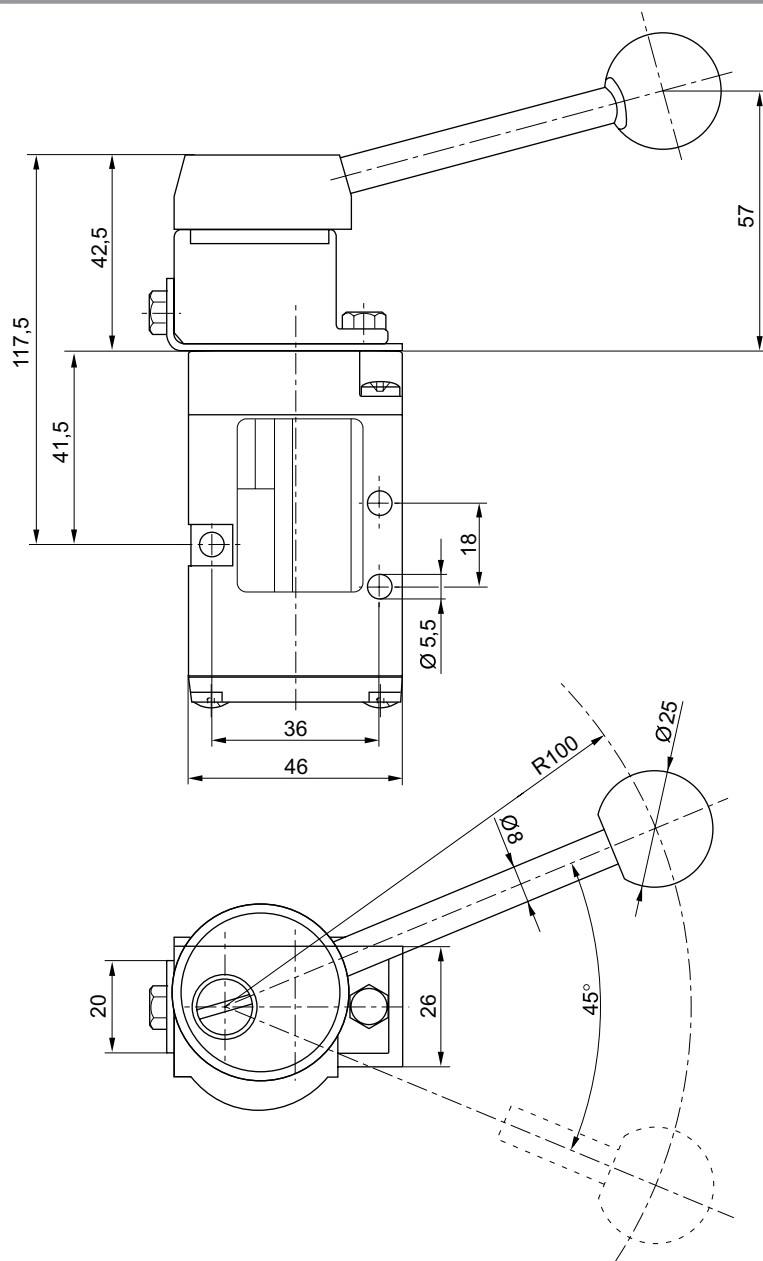
D563_421_b

Dimensions of basic valve apply to all types of actuation.

5/2-directional valve, Series CD04

► Qn= 900 l/min ► pipe connection ► compressed air connection output: G 1/8

Dimensions, Fig. 5



00127341

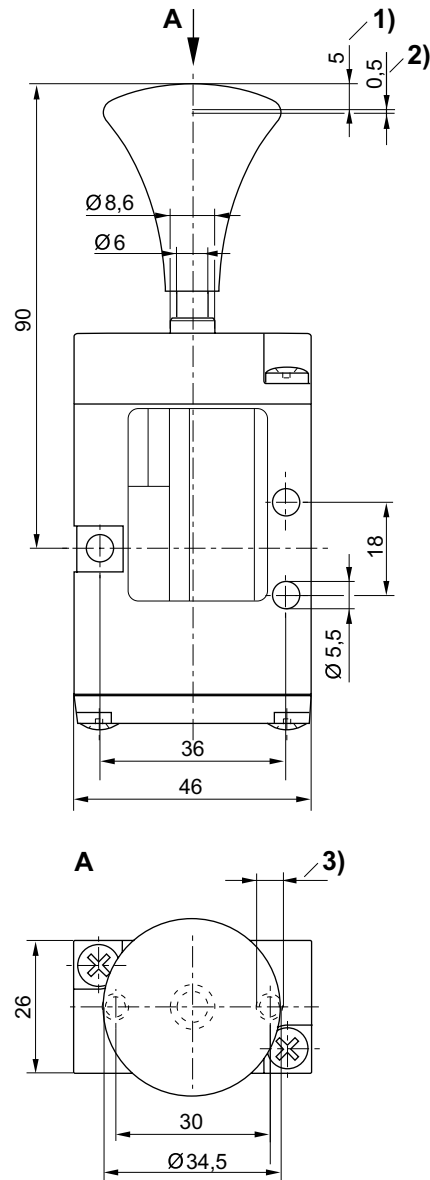
Dimensions of basic valve apply to all types of actuation.

Directional valves ► Mechanically operated

5/2-directional valve, Series CD04

► Qn= 900 l/min ► pipe connection ► compressed air connection output: G 1/8

Dimensions, Fig. 6



D563_422_a

1) Stroke 2) Overstroke 3) Ø 4.5 - 12 mm deep
 Dimensions of basic valve apply to all types of actuation.