

Directional valves ► Mechanically operated

3/2-directional valve, Series CD04

► Qn= 900 l/min ► compressed air connection output: G 1/8



00134140

Version	Spool valve, zero overlap
Sealing principle	Soft sealing
Working pressure min./max.	-0.95 bar / 10 bar
Ambient temperature min./max.	-20 °C / +65 °C
Medium temperature min./max.	-20 °C / +65 °C
Medium	Compressed air
Max. particle size	50 µm
Oil content of compressed air	0 mg/m³ - 1 mg/m³
Compressed air connection	according to ISO 228-1

Materials:

Housing	Die cast zinc; Polyamide, fiber-glass reinforced
Seals	Acrylonitrile Butadiene Rubber

	Actuating element	Version	Compressed air connection			Qn	Qn	Qn	Part No.
			Input	Output	Exhaust		1 → 2	2 → 3	
						[l/min]	[l/min]	[l/min]	
	Plunger	NC/NO	G 1/8	G 1/8	G 1/8	900	900	900	5634000100
	Roller	NC/NO	G 1/8	G 1/8	G 1/8	900	900	900	5634010100 R412008117
	Hand lever, with detent, without detent	NC/NO	G 1/8	G 1/8	G 1/8	900	900	900	5634030100
	Hand lever	NC/NO	G 1/8	G 1/8	G 1/8	900	900	900	5634040100
	Rotary lever, with detent	NC/NO	G 1/8	G 1/8	G 1/8	900	900	900	5634050100
	Button	NC/NO	G 1/8	G 1/8	G 1/8	900	900	900	5634060100

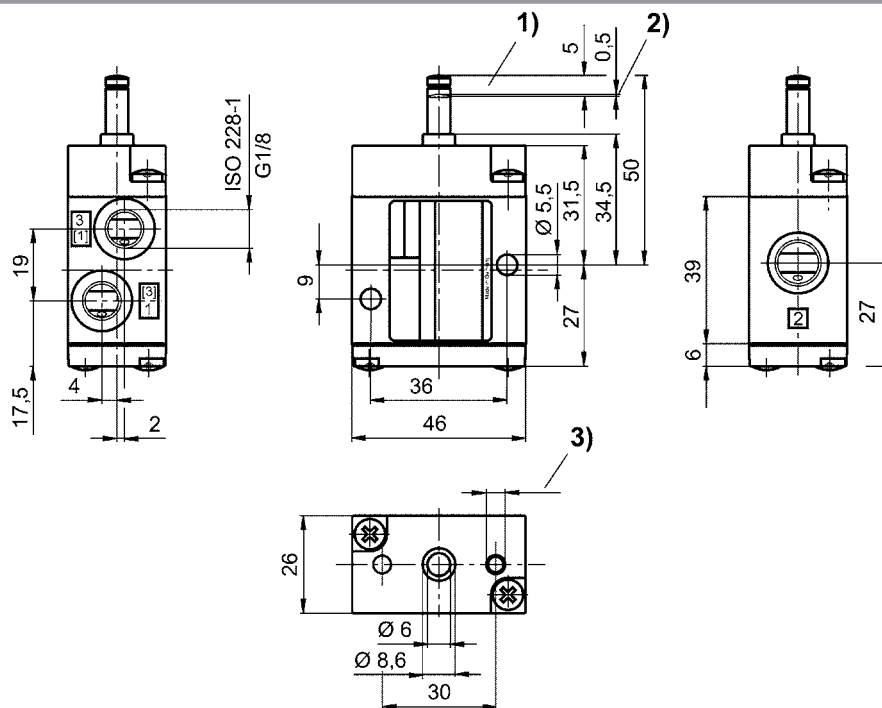
Part No.	Actuating force Min.	Material: Actuating control	Weight	Fig.
	[N]		[kg]	
5634000100	60	Stainless steel	0.23	Fig. 1
5634010100 R412008117	30	Polyoxymethylene Stainless steel	0.29	Fig. 2
5634030100	15	Polyoxymethylene	0.32	Fig. 3
5634040100	15	-	0.29	Fig. 4
5634050100	15	Plastic; Stainless steel	0.5	Fig. 5
5634060100	60	Polyoxymethylene	0.25	Fig. 6

Nominal flow Qn at 6 bar and Δp = 1 bar

3/2-directional valve, Series CD04

► Qn= 900 l/min ► compressed air connection output: G 1/8

Dimensions, Fig. 1



1) Stroke 2) Overstroke 3) Ø 4.5 - 12 mm deep
Dimensions of basic valve apply to all types of actuation.

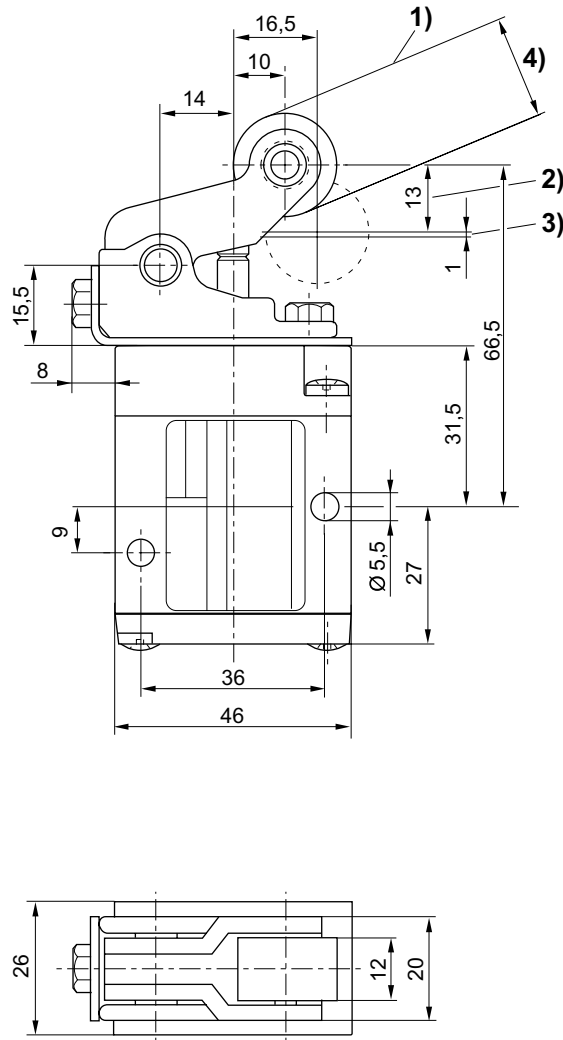
D563_400

Directional valves ► Mechanically operated

3/2-directional valve, Series CD04

► Qn= 900 l/min ► compressed air connection output: G 1/8

Dimensions, Fig. 2



D563_401

1) approach angle of rollers max. 30° 2) stroke 3) overstroke

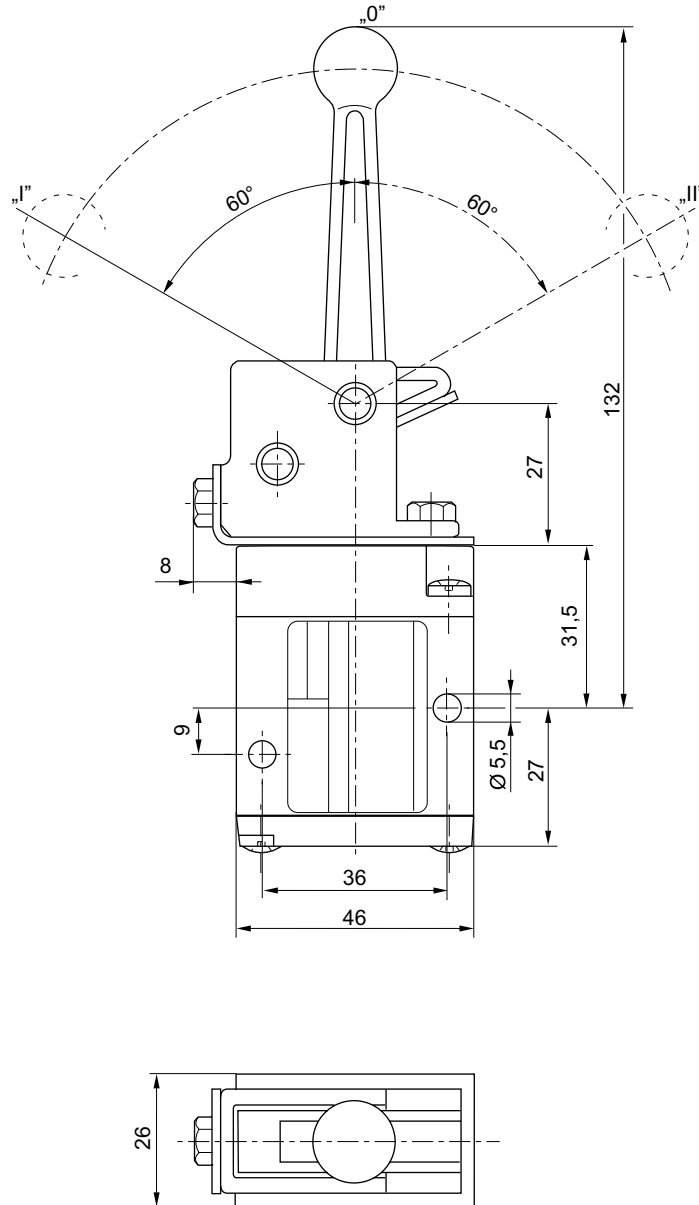
4) 5634010100: Ø20 (POM) / R412008117: Ø19 (ST)

Dimensions of basic valve apply to all types of actuation.

3/2-directional valve, Series CD04

► Qn= 900 l/min ► compressed air connection output: G 1/8

Dimensions, Fig. 3



D563_401_a

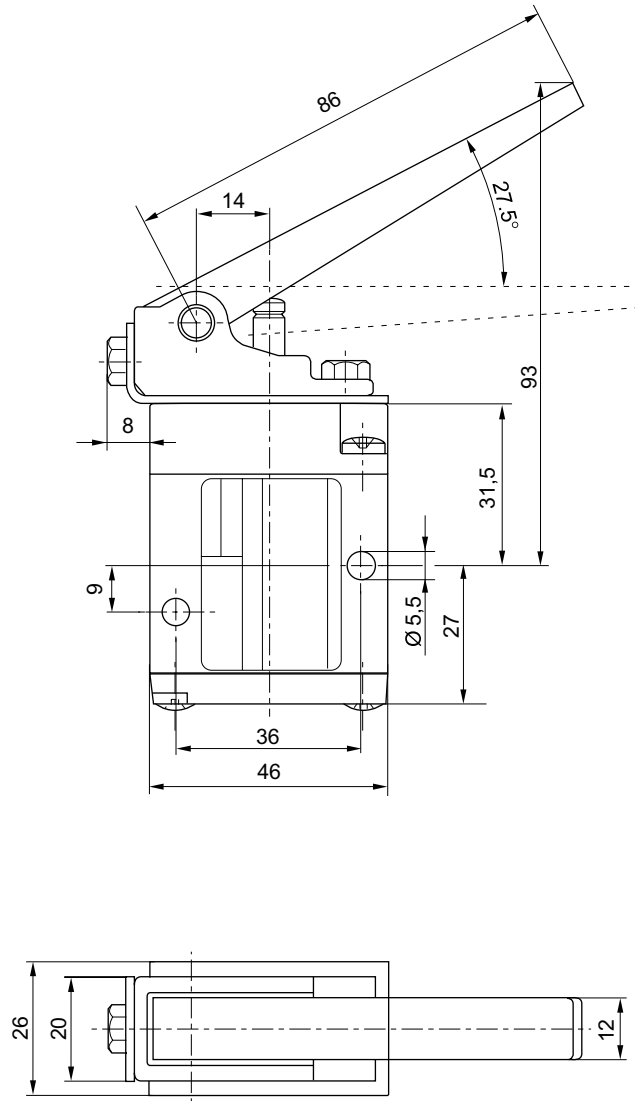
Position 0: initial position, position I: with detent; manual return, position II: automatic spring return.
 Dimensions of basic valve apply to all types of actuation.

Directional valves ► Mechanically operated

3/2-directional valve, Series CD04

► Qn= 900 l/min ► compressed air connection output: G 1/8

Dimensions, Fig. 4



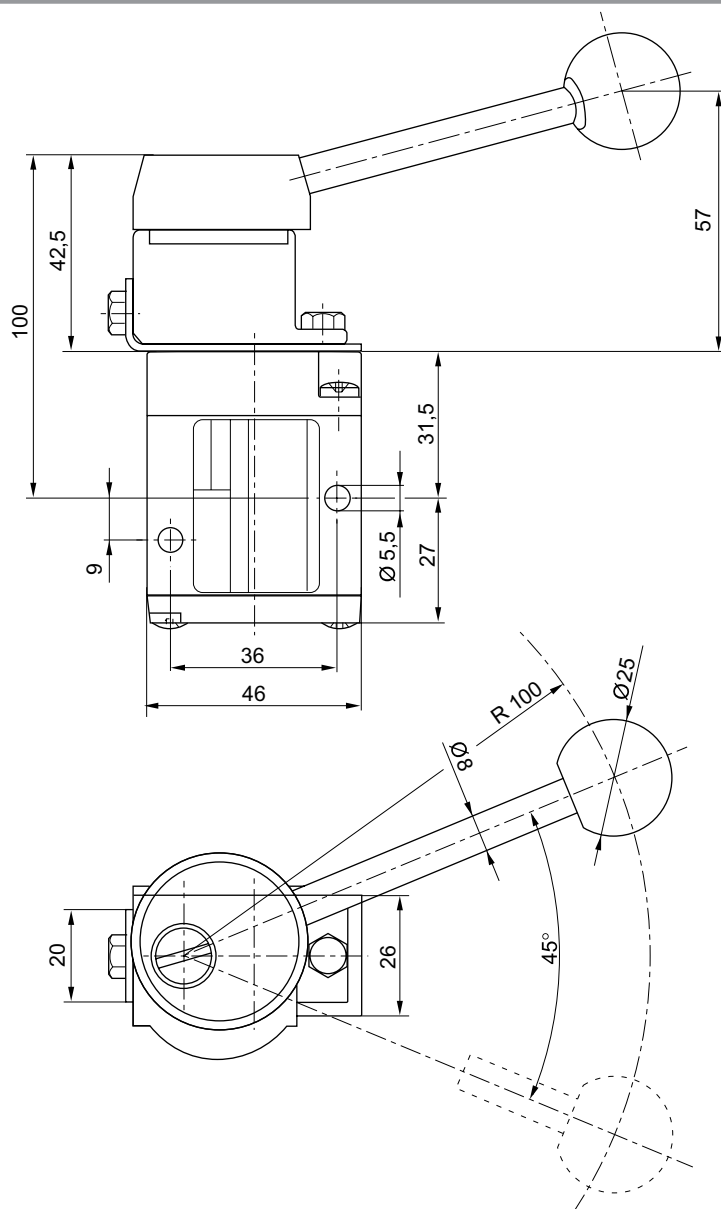
D563_401_b

Dimensions of basic valve apply to all types of actuation.

3/2-directional valve, Series CD04

► Qn= 900 l/min ► compressed air connection output: G 1/8

Dimensions, Fig. 5



D563_403

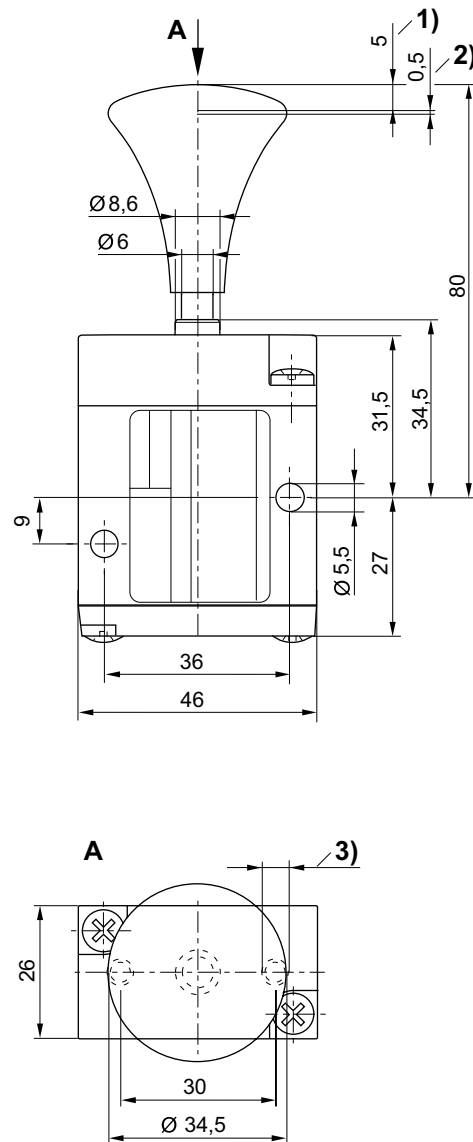
Dimensions of basic valve apply to all types of actuation.

Directional valves ► Mechanically operated

3/2-directional valve, Series CD04

► Qn= 900 l/min ► compressed air connection output: G 1/8

Dimensions, Fig. 6



1) Stroke 2) Overstroke 3) Ø 4.5 - 12 mm deep
Dimensions of basic valve apply to all types of actuation.

D563_403_a