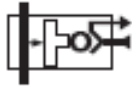





pneumatic sensor fittings

male thread BSPP and
metric, with LF 3000
push-in connection



7818

C



M5x0,8	7818 04 19
G1/8	7818 04 10
G1/4	7818 04 13
G3/8	7818 04 17
G1/2	7818 04 21

Working pressure : 3 to 8 bar

Working temperature :

- 15° to + 60°C

Breaking pressure : 0,6 bar

Response time : 3 ms