

Directional valves ▶ Supplementary products

4/2-directional valve, Series 840

▶ Qn = 200 l/min ▶ Pilot valve width: 22.5 mm ▶ pipe connection ▶ compressed air connection output: Ø 6
 ▶ Electr. connection: Plug, EN 175301-803, form C ▶ Manual override: with detent ▶ single solenoid ▶ Qn = 200 l/min



00138516

Version	Diaphragm poppet valve
Pilot	internal
Sealing principle	Soft sealing
Mounting on manifold strip	PRS strip
Working pressure min./max.	1.8 bar / 10 bar *
Control pressure min./max.	1.5 bar / 10 bar
Ambient temperature min./max.	-15°C / +50°C *
Medium temperature min./max.	-15°C / +50°C *
Medium	Compressed air
Max. particle size	50 µm
Oil content of compressed air	0 mg/m³ - 1 mg/m³
Connector standard	EN 175301-803, form C
Degree of protection	IP65
With connection	Protected against polarity reversal
Duty cycle	100 %
Switch-on time	12 ms
Switch-off time	12 ms
Weight	See table below
Materials:	
Housing	Polyoxymethylene
Seals	Acrylonitrile Butadiene Rubber

* The maximum working pressure depends on the ambient temperature. The following values are applicable:
 -15°C - 50°C: Working pressure 1.8 - 8 bar possible.
 -15°C - 40°C: Working pressure 1.8 - 10 bar possible.

Technical Remarks

- The min. control pressure must be adhered to, since otherwise faulty switching and valve failure may result!
- The pressure dew point must be at least 15 °C under ambient and medium temperature and may not exceed 3 °C.
- The oil content of compressed air must remain constant during the life cycle.
- Use only the approved oils from AVENTICS, see chapter „Technical information“.
- Versions with voltage of less than 50 V DC do not have a protective ground

Operational voltage			Voltage tolerance		Power consumption	Switch-on power		Holding power	
DC	AC 50 Hz	AC 60 Hz	DC	AC 60 Hz	DC	AC 50 Hz	AC 60 Hz	AC 50 Hz	AC 60 Hz
					W	VA	VA	VA	VA
12 V	-	-	-10% / +10%	-	1.6	-	-	-	-
24 V	-	-	-10% / +10%	-	1.6	-	-	-	-
-	24 V	24 V	-	-10% / +15%	-	3	2.6	2.2	1.9
-	110 V	110 V	-	-10% / +15%	-	3.1	2.6	2.2	1.9
-	230 V	230 V	-	-10% / +15%	-	3.2	2.8	2.3	2
-	230 V	230 V	-	-10% / +15%	-	3.5	3	2.5	2.2

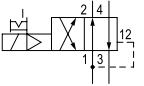
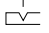
Supplementary products

Part numbers marked in bold are available from the central warehouse in Germany, see the shopping basket for more detailed information

Pneumatics catalog, online PDF, as of 2014-11-03, ©AVENTICS S.a.r.l., subject to change

4/2-directional valve, Series 840

- ▶ Qn = 200 l/min ▶ Pilot valve width: 22.5 mm ▶ pipe connection ▶ compressed air connection output: Ø 6
- ▶ Electr. connection: Plug, EN 175301-803, form C ▶ Manual override: with detent ▶ single solenoid ▶ Qn = 200 l/min

	MO	Compressed air connection				Operational voltage			Part No.
		Input	Output	Exhaust	Pilot control exhaust	DC	AC 50 Hz	AC 60 Hz	
		Ø6x1	Ø 6	Ø6x1	Ø 4,5	12 V	-	-	5728450410
						24 V	-	-	5728450420
						24 V	-	-	5728450620
						-	24 V	24 V	5728455420
						-	110 V	110 V	5728455470
						-	230 V	230 V	5728455480
						-	230 V	230 V	5728455680

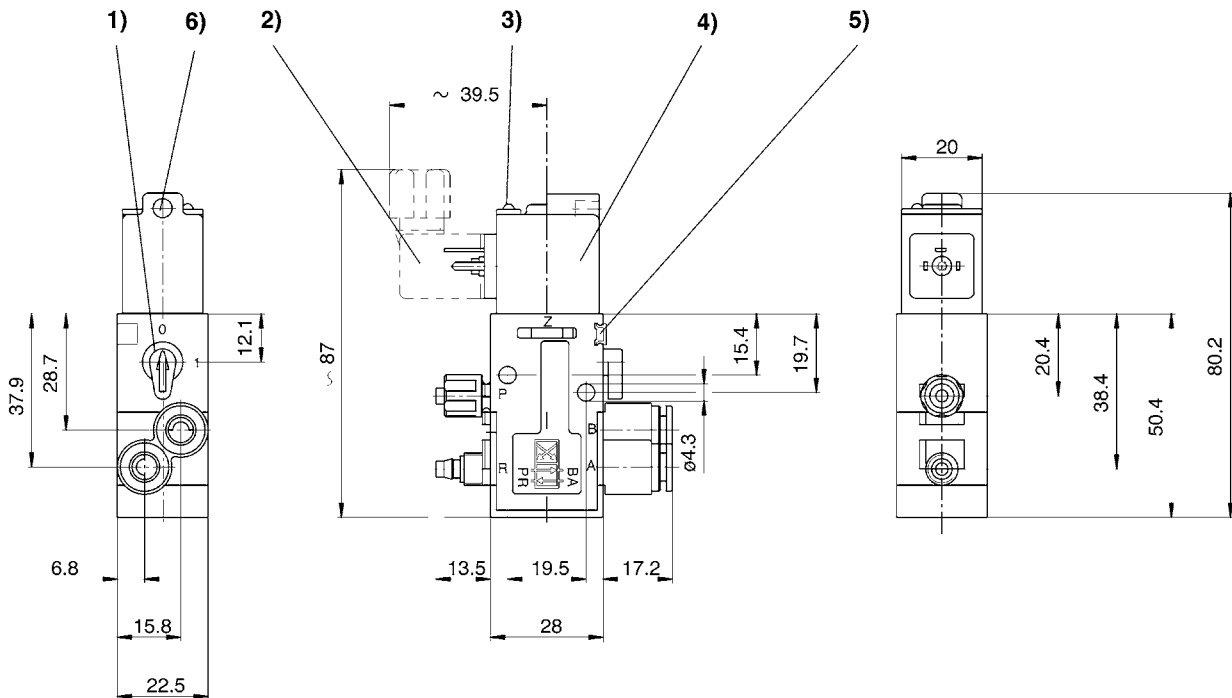
Part No.	Holding power	Holding power	Switch-on power	Switch-on power	Power consumption	Flow rate value	Weight	Note
	AC 50 Hz	AC 60 Hz	AC 50 Hz	AC 60 Hz	24 V DC	Qn		
	[VA]	[VA]	[VA]	[VA]	[W]	[l/min]	[kg]	
5728450410	-	-	-	-	1.6	200	0.101	-
5728450420	-	-	-	-	1.6		0.103	-
5728450620	-	-	-	-	1.6		0.103	1)
5728455420	2.2	1.9	3	2.6	-		0.1	-
5728455470	2.2	1.9	3.1	2.6	-		0.101	-
5728455480	2.3	2	3.2	2.8	-		0.102	-
5728455680	2.5	2.2	3.5	3	-	0.102	1)	

HHB = Manual override

1) LED status display: Red

Nominal flow Qn at 6 bar and Δp = 1 bar

Dimensions



D572_845

- 1) manual override 2) el. connector 3) LED display 4) coil can be rotated at 180° intervals
5) mounting space for name plate 6) hold for M5 fitting or silencer Ø 4.5 mm